



LESCO[®]

PROSECUTOR[®] RTU

ACTIVE INGREDIENT:
Glyphosate, isopropylamine salt 2.0%
OTHER INGREDIENTS:..... 98.0%
TOTAL:..... 100.0%

Ready to use – No mixing
Fast acting formula – Starts to work in hours

KEEP OUT OF REACH OF CHILDREN
CAUTION
See FIRST AID Below

FIRST AID

IF IN EYES:

- Hold eye open and rinse slowly and gently with water for 15 to 20 minutes.
- Remove contact lenses, if present, after the first 5 minutes, then continue rinsing eye.

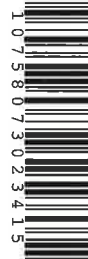
IF ON SKIN OR CLOTHING:

- Take off contaminated clothing.
- Rinse skin immediately with plenty of water for 15 to 20 minutes.

IF SWALLOWED:

- Call a poison control center or doctor immediately for treatment advice.
- Have person sip a glass of water if able to swallow.
- Do not induce vomiting unless told to do so by a poison control center or doctor.
- Do not give anything by mouth to an unconscious or convulsing person.

Call a poison control or doctor for treatment advice. Have the product container or label with you when calling a poison control center or doctor or going for treatment. For information on this pesticide product (including health concerns, medical emergencies, or pesticide incidents), call the National Pesticide Information Center at 1-800-858-7378.



PRECAUTIONARY STATEMENTS

HAZARDS TO HUMANS AND DOMESTIC ANIMALS

CAUTION: Causes moderate eye irritation. Harmful if absorbed through skin or swallowed.
Avoid contact with skin, eyes or clothing.

PERSONAL PROTECTIVE EQUIPMENT (PPE)

Wear long-sleeved shirt, long pants, chemical-resistant gloves and shoes plus socks.

#702341 Net Content: 1 gallon (3.78 L)

LESCO, Inc. • 1385 East 36th Street • Cleveland, OH 44114-4114

PEEL BACK BOOK HERE ▲

PEEL BACK BOOK HERE ▲

USER SAFETY RECOMMENDATIONS

Users should: (1) Wash hands before eating, chewing gum, using tobacco or using the toilet. (2) Remove clothing/PPE immediately if pesticide gets inside. Then wash thoroughly and put on clean clothing. (3) Remove PPE immediately after handling this product. Wash the outside of gloves before removing. As soon as possible, wash thoroughly and change into clean clothing.

ENVIRONMENTAL HAZARDS

Do not apply directly to water. Do not contaminate water when disposing of equipment washwaters or rinsate.

USE INFORMATION

This product is a nonselective systemic herbicide that is absorbed by the plants through its leaves and moves down to the roots killing the plant. Plants yellow and wilt within hours and are killed in 1 to 2 weeks period.

This product is strongly bound by the soil and is readily degraded by soil microorganisms, thus, has no soil residual activity.

This product will kill weeds, unwanted grass, vines, brush, and stumps. It controls even difficult-to-kill weeds like Blackberry, Poison ivy, and Poison oak. This product can be applied around fences, trees and shrubs. It can be used on flower beds, mulch or gravel beds, vegetable and herb gardens, on and around driveways, walkways, patios, foundations, and other areas in the yard.

Weeds Controlled

Alder	Dogfennel	Maple	Sowthistle
Arichoke, Jerusalem	Elderberry	Mayweed	Spotted Spurge
Bahiagrass	Elm	Milkweed	Sprangletop
Barberry	Evening Primrose	Mock Orange	Spurge
Barnyardgrass	Fall Panicum	Mouseear Chickweed	Sumac
Beggarweed	False Dandelion	Multiflora Rose	Sunflower
Bentgrass	Fennel	Nimblewill	St. Augustinegrass
Bermudagrass	Fescue Grass	Nutsedge	Tansy Mustard
Bittercress	Fiddleneck	Oak	Tansy Ragwort
Blackberry	Field Bindweed	Oleander	Texas Panicum
Black Medic	Field Pennycress	Orchardgrass	Thistle
Bluegrass	Field Sandbur	Oxalis	Timothy
Broadleaf Plantain	Filaree	Pampasgrass	Toadflax
Bromegrass	Florida Pusley	<i>Paspalum</i> spp.	Torpedograss
Buckhorn Plantain	Foxtail	Pennsylvania Smartweed	Trailing Lantana
Buffalograss	Garden Spurge	Pennywort	Trumpetcreeper
Bull Thistle	Goosegrass	Pigweed	Tumble Mustard
Burclover	Green Foxtail	Pine	Velvelfeaf
Buttercup	Guineagrass	Plantain	Vaseygrass
Canada Thistle	Hemp Sesbania	Poison Hemlock	Virginia-creeper
Canarygrass	Henbit	Poison Ivy	Western Red Cedar
Carpetgrass	Hickory	Poison Oak	White Clover
<i>Ceanothus</i> spp.	Honeysuckle	Prickly Lettuce	Whistletop
Cherry	Horsenettle	Primrose	Wild Barley
Chickweed	Horseradish	Prostrate Spurge	Wild Blackberry
Clover	Horseweed or Marestail	Puncturevine	Wild Carrot
Cocklebur	Iceplant	Purple Cudweed	Wild Geranium
Cogongrass	Ironweed	Purslane	Wild Morningglory
Common Groundsel	Johnsongrass	Quack Grass	Wild Mustard
Common Mullien	Kikuyugrass	Quaking Aspen	Wild Oats
Common Ragweed	Knapweed	Ragweed	Wild Sweet Potato
Coral-bead	Knawel	Raspberry	Willow
Coyotebrush	Knotweed	Red Clover	Witchgrass
Crabgrass	Kudzu	Redroot Pigweed	Yarrow
Creeping Beggarweed	Lambsquarters	Red Sorrel	Yellow Oxalis
Creeping Charlie	Lantana	Ryegrass	Yellow Starthistle
Curly Dock	London Rocket	Shepherdspurse	Zoysiagrass or Japanese Lawngrass and many other weeds
Dallisgrass	Lovegrass	Smartweed	
Dandelion	Mallow	Smooth Catsear	
Dewberry	Manzanita	Smooth Pigweed	

PEEL BACK BOOK HERE ▲

DIRECTIONS FOR USE

It is a violation of Federal law to use this product in a manner inconsistent with its labeling.

USE PRECAUTIONS RESTRICTIONS:

Do not apply this product in a way that will contact any persons or pets, either directly or through drift. Keep people and pets out of the area during application. Do not allow people or pets to enter the treated area until sprays have dried.

IMPORTANT: Read the entire Directions for Use, all precautions, and the Conditions of Sale and Warranty before using this product.

This product will kill or injure all green vegetation contacted. Avoid herbicide contact with foliage, green stems, exposed non-woody roots or fruit of crops, desirable plants and trees because injury or destruction may result. Do not spray desirable plants or grasses. If desirable plant is accidentally sprayed with this product, immediately rinse off with plenty of water. Apply when wind is calm. This product is not recommended for use as spot weed control in Lawns.

The following crops may be planted one day after application of this product:

Artichoke (Jerusalem), Beans (all types), Beet (green), Blackberry, Blueberry, Boysenberry, Broccoli, Brussels sprout, Cabbage (all types), Carrot, Cauliflower, Celery, Chard (Swiss), Chickory, Collards, Currants, Dewberries, Elderberry, Endive, Gooseberry, Horseradish, Huckleberry, Kale, Kohlrabi, Leek, Lentil, Lettuce, Loganberry, Mustard green, Okra, Olallieberry, Onion, Parsley, Parsnip, Potato, Radish, Rape greens, Raspberry (black, red), Rhubarb, Rutabaga, Spinach, Sweet potato, Turnip, Yam. (Note: If this product is used for controlling weeds around Berries, do not harvest Berries within 14 days of last application.)

The following crops may be planted 3 days after application:

Corn, Cucumber, Eggplant, Garlic, Gourd, Melons (all types), Peas (all types), Pepper (all types), Pumpkin, Squash (summer, winter); Tomatillo, Tomato (by seed), Watercress.
Other plants not listed above including transplanted Tomatoes may be planted 30 days after application of this product.

APPLICATION PROCEDURES

For best results, apply this product on a sunny day with daytime temperatures above 60°F and when weeds are actively growing.

Use a coarse spray when applying this product.

To avoid contact of this product on desirable plants, shield the plants with a plastic sheet, plastic or cardboard.

To kill Vines growing on non-living objects such as fences, poles, or tree trunks with mature bark, cut the vines to a height of 3 to 4 feet and spray thoroughly. For vines growing up shrubs or trees with green bark, cut the vines at their base and spray thoroughly.

To kill Brush, cut to the ground if taller than 5 feet and then, spray regrowth. To kill Stumps, cut the living stump close to the ground. Spray thoroughly immediately all remaining surfaces.

PEEL BACK BOOK HERE ▲

STORAGE AND DISPOSAL

Do not contaminate water, food, or feed by storage and disposal.

Pesticide Storage: Store pesticide in original container in a cool, dry place preferably in a locked storage cabinet out of reach of children. Protect from freezing.

Pesticide Disposal: Wastes resulting from the use of this product may be disposed of on site or at an approved waste disposal facility.

Container Disposal:

Nonrefillable Container (rigid material; less than 5 gallons): Nonrefillable container. Do not reuse or refill this container. Offer for recycling, if available. Clean container promptly after emptying.

Triple rinse as follows: Empty the remaining contents into application equipment or a mix tank and drain for 10 seconds after the flow begins to drip. Fill the container the container 1/4 full with water and recap. Shake for 10 seconds. Pour rinsate into application equipment or a mix tank or store rinsate for later use or disposal. Drain for 10 seconds after the flow begins to drip. Repeat this procedure two more times. Dispose of empty container in a sanitary landfill or by incineration, or , if allowed by State and local authorities, by burning. If burned, stay out of smoke.

PEEL BACK BOOK HERE ▲

PEEL BACK BOOK HERE ▲

CONDITION OF SALE AND LIMITATION OF WARRANTY AND LIABILITY

NOTICE: Read the entire Directions for Use and Conditions of Sale and Limitation of Warranty and Liability before buying or using this product. If the terms are not acceptable, return the product at once, unopened, and the purchase price will be refunded.

The Directions for Use of this product must be followed carefully and completely. It is impossible to eliminate all risks inherently associated with the use of this product. To the extent consistent with applicable law, Buyer and/or User assume all risks of ineffectiveness or other unintended consequences or damages that may result from conditions outside or beyond the control of LESCO, Inc. including but not limited to, such factors as manner of use or application, weather or weather conditions outside the range considered normal at the application site or for the time period in which the product is applied, the presence of other materials, incompatible products, or other influencing factors which are beyond the control of LESCO, Inc.. To the extent consistent with applicable law, all such risks shall be assumed by Buyer and/or User, and Buyer and/or User agrees to hold LESCO, Inc. harmless for any claims relating to such factors.

LESCO, Inc. warrants that this product conforms to the chemical description on the label and is reasonably fit for the purposes stated in the Directions for Use, subject to the inherent risks referred to above, when used in accordance with the Directions for Use under normal use conditions. To the extent consistent with applicable law, this warranty does not extend to the use of this product contrary to label instructions, or under abnormal conditions or under conditions not reasonably foreseeable to or beyond the control of LESCO, Inc. and Buyer and/or User assume the risk of any such use. **TO THE EXTENT CONSISTENT WITH APPLICABLE LAW, LESCO, INC. MAKES NO WARRANTIES OF MERCHANTABILITY OR OF FITNESS FOR A PARTICULAR PURPOSE NOR ANY OTHER EXPRESS OR IMPLIED WARRANTY EXCEPT AS STATED ABOVE.**

TO THE EXTENT CONSISTENT WITH APPLICABLE LAW, THE EXCLUSIVE REMEDY OF THE BUYER AND/OR USER AND THE EXCLUSIVE LIABILITY OF LESCO, INC. FOR ANY AND ALL CLAIMS, LOSSES, INJURIES OR DAMAGES (INCLUDING CLAIMS BASED ON BREACH OF WARRANTY, CONTRACT, NEGLIGENCE, TORT, STRICT LIABILITY OR OTHERWISE) RESULTING FROM THE USE OR HANDLING OF THIS PRODUCT, SHALL BE THE RETURN OF THE PURCHASE PRICE OF THE PRODUCT OR, AT THE ELECTION OF LESCO, INC. REPLACEMENT OF THE PRODUCT, OR IF NOT ACQUIRED BY PURCHASE, REPLACEMENT OF SUCH QUANTITY. TO THE EXTENT CONSISTENT WITH APPLICABLE LAW, IN NO EVENT SHALL LESCO, Inc., BE LIABLE FOR ANY INCIDENTAL, CONSEQUENTIAL OR SPECIAL DAMAGES.

LESCO, Inc. offers this product, and Buyer and/or User accepts it, subject to the foregoing Conditions of Sale and Limitation of Warranty and Liability, which may not be modified except by written agreement signed by a duly authorized representative of LESCO, Inc. LESCO and Prosecutor are registered trademarks and the sweeping design is a trademark of LESCO Technologies, LLC. All other trademarks are the property of their respective owners.

E.P.A. Reg. No. 19713-607-10404

EPA EST. NO. 044956-CA-001, 044956-AL-001, 044956-PA-001

First letter in lot code indicates manufacturing site.

Net Content: 1 gallon (3.78 L)

#702341

**Distributed by: LESCO, Inc.
1385 East 36th Street Cleveland, OH 44114-4114**