



TRIPLE ACTION NEEM OIL

Broad Spectrum Fungicide/Insecticide/Miticide

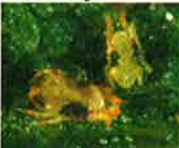
ACTIVE INGREDIENT:
Clarified Hydrophobic Extract of
Neem Oil 70%
INERT INGREDIENTS: .. 30%
TOTAL 100%

**KEEP OUT OF
REACH OF CHILDREN
CAUTION**

See label booklet for Precautionary
Statements and Directions for Use,
including Storage and Disposal.



Powdery Mildew



Spider mites



Aphids

Net Contents Liquid: 8 ounces (.237 liters)

For use on roses, flowers, houseplants, ornamental trees and shrubs,
vegetables and home lawns.

Distributed by: **Southern**

Agricultural Insecticides, Inc.
Palmetto, FL 34220 Hendersonville, NC 28793
Boone, NC 28607 F1
EPA Reg. No. 70051-2-829 EPA Est. No. 829-FL-1



Triple Action (BOOKLET FRONT) NEEM OIL

**Broad
Spectrum
Fungicide
Insecticide
Miticide**



For use on roses, flowers, houseplants, ornamental trees and shrubs, fruits and vegetables, homelawns.

For use in and around home and home garden.

ACTIVE INGREDIENT:

Clarified Hydrophobic Extract of
Neem Oil 70%
INERT INGREDIENTS: 30%
TOTAL 100%

Neem Oil is a registered product of Certis USA

Complete label directions and precautions inside booklet.

Distributed by:

Southern Agricultural Insecticides, Inc.

P.O. Box 218 Palmetto, FL 34220 EPA Reg. No. 70051-2-829
EPA Est. No. 829-FL-1

Controls Black Spot, Powdery Mildew, Rust, Downy Mildew, Spider Mites, Aphids, Whiteflies, Anthracnose, Scab and flower, Botrytis and other insect pests.

KEEP OUT OF REACH OF CHILDREN CAUTION

FIRST AID

If in eyes: Hold eye open and rinse slowly and gently with water for 15-20 minutes. Remove contact lenses, if present, after the first 5 minutes, then continue rinsing eye.

Call a poison control center or doctor for treatment advice.

If on skin or clothing: Take off contaminated clothing. Rinse skin immediately with plenty of water for 15-20 minutes. Call a poison control center or doctor for treatment advice

Have the product container or label with you when calling a poison control center or doctor, or going for treatment.
Hot Line Number: 1-800-255-3924.

PRECAUTIONARY STATEMENTS

HAZARDS TO HUMANS AND DOMESTIC ANIMALS

CAUTION: Causes moderate eye irritation. Harmful if absorbed through the skin. Avoid contact with skin, eyes, or clothing. Wash thoroughly with soap and water after handling and before eating, drinking, chewing gum, or using tobacco. Remove and wash contaminated clothing before reuse.

ENVIRONMENTAL HAZARDS

Do not apply directly to water. Do not contaminate water when disposing of equipment washwaters or rinsate. To protect the environment, do not allow pesticide to enter or run off into storm drains, drainage ditches, gutters or surface waters. Applying this product in calm weather when rain is not predicted for the next 24 hours will help to ensure that wind or rain does not blow or wash pesticide off

treatment area. Rinsing application equipment over the treated area will help avoid run off to water bodies or drainage systems.

BEE HAZARD

This product is toxic to bees exposed to direct treatment. Do not apply this product while bees are actively visiting the treatment area.

DIRECTIONS FOR USE

IT IS A VIOLATION OF FEDERAL LAW TO USE THIS PRODUCT IN A MANNER INCONSISTENT WITH ITS LABELING

GENERAL INFORMATION

- * Defends your roses against insects diseases and mites.
- * Do not add adjuvants (spreaders, stickers, extenders, etc.) to Triple Action Neem Oil.
- * Stops powdery mildew in 24 hours.
- * Kills eggs, larvae and adult insects.
- * Shake well before using.
- * For optimal performance, do not mix with cold water (less than 34°F).
- * Prevents and controls black spot on roses, anthracnose, rust and powdery mildew.
- * Do not apply to wilted or otherwise stressed plants, or to newly transplanted materials prior to root establishment. May also be used as a dormant or delayed dormant spray to control overwintering eggs of various insects on fruit and shade trees, shrubs, roses and other ornamentals and vegetables. Spray to visibly wet or until all plant surfaces are completely wet.
- Do not apply to known sensitive plant species such as impatiens flowers, fuchsia flowers, hibiscus flowers, some rose flowers; ornamental olive trees or carnation varieties without prior testing.
- As with other oil-based products exercise care in timing applications to early morning/late evening to minimize the potential for leaf burn.
- * Use with care on plants with tender tissue. Check for leaf burn in small scale trials prior to use.

Can be used as a leaf polish on hardy plants.

FUNGICIDE USE:

For use on FRUITS, VEGETABLES, HERBS, SPICES, ROSES, HOUSEPLANTS, FLOWERS, TREES and SHRUBS, HOME LAWNS.

Management of Turf Diseases

Triple Action Neem Oil may be used on all turf such as Kentucky bluegrass, perennial ryegrass, turf type tall fescue, Bermudagrass, zoysiagrass and St. Augustinegrass around the home. Refer to table for detailed application rates.

| Spray Target | Concentration | Spray Interval | Precautions |
|--------------|----------------------------|----------------|---------------------------|
| Snow Mold | 1:100-1:500 (1.0%-2.0%) | 14 days | In fall before first snow |
| Dollar Spot | 1:100-1:200 (1.0%-0.5%) | 7-14 days | At first sign of disease |
| Brown Patch | 1:100-1:200 (1.0%-0.5%) | 7-14 days | At first sign of disease |

APPLICATION INSTRUCTIONS:

Neem Oil is an effective fungicide for the prevention and control of various fungal diseases including powdery mildew, black spot, downy mildew, anthracnose, rust, leaf spot, botrytis, needle rust, scab and flower, twig, tip blight, and alternaria. As a preventative, apply Triple Action Neem Oil on a 7 to 14 day schedule until disease development is no longer present. To control disease already present, apply Triple Action Neem Oil on a 7 day schedule until disease pressure is eliminated. Then continue spraying on a 14 day schedule to prevent the disease from reoccurring. To prevent rust leaf spot diseases, anthracnose and scab, begin applications at the first sign of spring budding. To prevent powdery mildew, apply in mid-summer or when disease is first detected. Continue applications until disease pressure no longer exists.

MIXING INSTRUCTIONS:

Mix Triple Action Neem Oil at the rate of 2 tablespoons (1 fluid ounce) per gallon of water. Mix 0.5 tablespoons (0.25 fluid ounces) of Neem Oil per quart of water. Thoroughly mix solution and spray all plant surfaces (including undersides of leaves) until completely wet. Frequently mix solution as you spray.

INSECTICIDE/MITICIDE USE

For use on FRUITS, VEGETABLES, HERBS, SPICES, ROSES, HOUSEPLANTS FLOWERS, TREES AND SHRUBS.

APPLICATION INSTRUCTIONS

Apply Triple Action Neem Oil at first sign of insects/mites. For control of aphids, spider mites, scale, whiteflies, beetles, leafrollers and other insect pests Triple Action Neem Oil is most effective when applied every 7 to 14 days. For heavy insect populations, spray on a 7 day schedule.

MIXING INSTRUCTIONS:

Mix Triple Action Neem Oil at the rate of 2-4 tablespoons (1-2 fluid ounces) per gallon of water. Mix 0.5-1.0 (0.25-0.50 fluid ounces) per quart of water. Thoroughly mix solution and spray all plant surfaces (including undersides of leaves) until completely wet. Frequently mix solution as you spray.

CAN BE USED UP TO DAY OF HARVEST

STORAGE AND DISPOSAL

Pesticide Storage: Keep in original container. Store away from direct sunlight, feed, or foodstuffs. Keep container tightly sealed when not in use. Keep from freezing.

Pesticide and Container Disposal

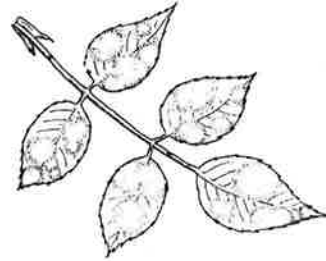
If empty: Non-refillable container. Do not reuse this container. Place in trash or offer for recycling if available.

If partly filled: Call your local solid waste agency or 1-800-CLEANUP for disposal instructions. Never place unused product down any indoor or outdoor drain.

Warranty

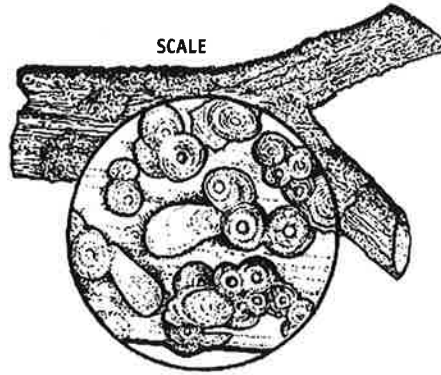
Southern Agricultural Insecticides, Inc. warrants that the material contained herein conforms to the description on the label and is reasonably fit for the purposes referred to in the directions for use. Timing and method of application, weather, watering practices, nature of soil, the insect problem, condition of the crop, incompatibility with other chemicals not specifically recommended, and other influencing factors in the use of this product are beyond the control of the seller. To the extent consistent with applicable law, Buyer assumes

all risks of use, storage or handling of this material not in strict accordance with directions given herein. NO OTHER EXPRESS OR IMPLIED WARRANTY OF THE FITNESS OR MERCHANTABILITY IS MADE.

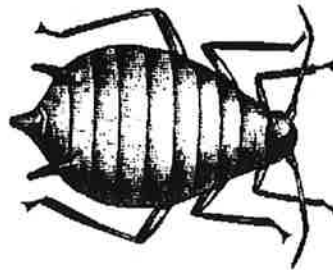


Mite

If any part of this label is missing or for information and questions concerning this product please contact us by email at info@southernag.com



SCALE



Aphid